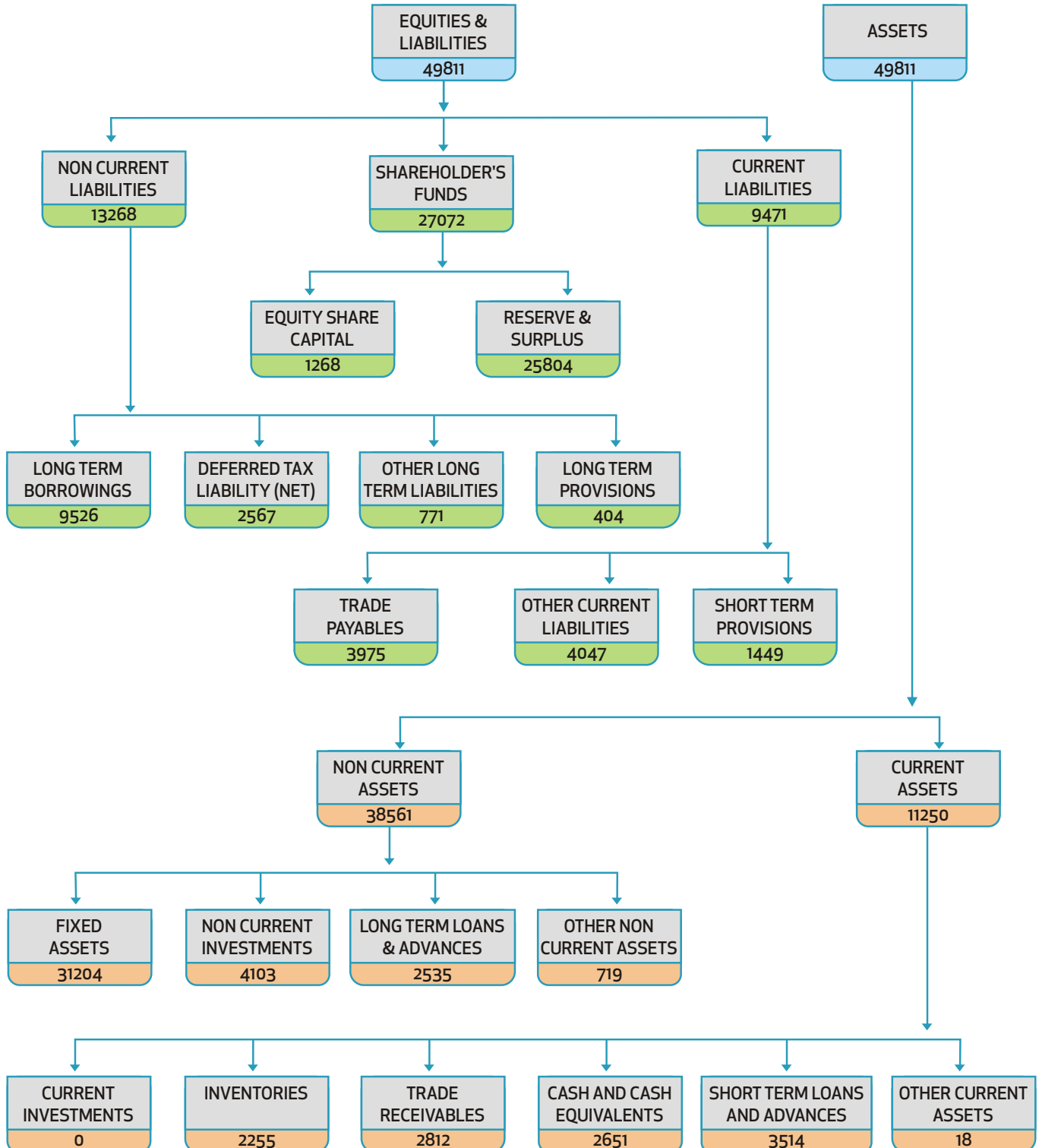


## STATEMENT OF ASSETS AND LIABILITIES

(₹ in Crores)

AS AT 31<sup>ST</sup> MARCH 2014



## FIVE YEAR PROFILE (STAND ALONE)

### (A) FINANCIAL

(₹ in Crores)

	2009-10	2010-11	2011-12	2012-13	2013-14
PAID-UP CAPITAL	1,268.48	1,268.48	1,268.48	1,268.48	1,268.48
RESERVES & SURPLUS	15,530.52	17,984.86	20,357.35	22,959.32	25,803.85
SECURED LOANS	1,446.00	2,310.00	3,023.50	4,106.00	4,679.75
UNSECURED LOANS	34.38	-	2,323.35	4,957.50	5,588.33
DEFERRED TAX LIABILITY (NET)	1,389.56	1,633.24	1,768.64	2,300.06	2,566.37
	19,668.94	23,196.58	28,741.32	35,591.36	39,906.78
REPRESENTED BY :					
GROSS BLOCK	21,037.67	22,144.38	26,306.63	31,148.97	34,056.32
LESS : DEPRECIATION	9,106.57	9,740.81	10,449.01	11,441.52	12,579.69
NET FIXED ASSETS	11,931.10	12,403.57	15,857.62	19,707.45	21,476.63
CAPITAL WORK-IN-PROGRESS	2,330.49	5,879.17	8,241.76	9,118.99	9,757.19
INVESTMENTS / ADVANCES FOR INVESTMENT (PENDING ALLOTMENT)	2,073.03	2,582.52	3,548.93	3,955.15	4,288.70
NET CURRENT ASSETS	3,334.32	2,331.32	1,093.01	2,809.77	4,384.26
	19,668.94	23,196.58	28,741.32	35,591.36	39,906.78
GROSS SALES	25,375.80	32,907.09	40,821.79	48,005.27	58,012.06
GROSS MARGIN	5,210.37	5,973.10	6,247.18	7,233.73	7,944.66
DEPRECIATION	561.90	650.25	790.71	980.94	1,176.15
INTEREST	70.00	82.86	116.46	195.02	366.19
PROFIT/(LOSS) BEFORE TAX	4,578.47	5,239.99	5,340.01	6,057.77	6,402.32
PROFIT/(LOSS) AFTER TAX	3,139.84	3,561.13	3,653.84	4,022.20	4,375.27
DIVIDEND INCLUDING INTERIM DIVIDEND	951.36	951.36	1,103.57	1,217.74	1,319.21
CORPORATE DIVIDEND TAX	158.99	155.32	179.02	203.03	224.20
INTERNAL GENERATION	3,701.74	4,211.38	4,444.55	5,003.14	5,551.42
NET WORTH	16,607.48	19,054.12	21,449.44	24,038.17	26,858.08
CAPITAL EMPLOYED INCLUDING ASSETS UNDER CONSTRUCTION & INVESTMENTS	19,668.94	23,196.58	28,741.32	35,591.36	39,906.78

### (B) GAS THROUGHPUT / PRODUCTION

	2009-10	2010-11	2011-12	2012-13	2013-14
NATURAL GAS (MMSCMD)	106.73	117.91	117.62	104.90	96.22
LPG (M/T)	1099554	1068156	1124341	1077866	1026543
SBP SOLVENT/NAPHTHA (M/T)	102479	111140	144165	147988	119713
PENTANE (M/T)	58551	34523	23144	20739	21669
PROPANE (M/T)	179274	155152	146015	129570	134411
ETHYLENE (M/T)	429992	428444	457080	448534	450870
HDPE/LLDPE (M/T)	417147	416396	446041	441051	440155

**(C) FINANCIAL RATIOS**

	2009-10	2010-11	2011-12	2012-13	2013-14
NET WORTH PER RUPEE OF PAID-UP CAPITAL (₹)	13.09	15.02	16.91	18.95	<b>21.17</b>
BORROWINGS TO NET WORTH (₹)	0.09	0.12	0.25	0.38	<b>0.38</b>
PROFIT BEFORE TAX TO CAPITAL EMPLOYED (%)	23.28	22.59	18.58	17.02	<b>16.04</b>
PROFIT BEFORE TAX TO NET WORTH (%)	27.57	27.50	24.90	25.20	<b>23.84</b>
PROFIT BEFORE TAX TO GROSS SALES (%)	18.04	15.92	13.08	12.62	<b>11.04</b>
PROFIT BEFORE TAX TO GROSS FIXED ASSETS (%)	21.76	23.66	20.30	19.45	<b>18.80</b>
GROSS SALES TO CAPITAL EMPLOYED (%)	129.01	141.86	142.03	134.88	<b>145.37</b>
EARNING PER SHARE (₹)	24.75	28.07	28.80	31.71	<b>34.49</b>
DIVIDEND PER SHARE (₹)	7.50	7.50	8.70	9.60	<b>10.40</b>
DIVIDEND PAYOUT RATIO (INCLUDING DIVIDEND TAX)	35.36	31.08	35.10	35.32	<b>35.28</b>



## FIVE YEAR FINANCIAL PROFILE CONVERTED IN US\$# (STAND ALONE)

(In US\$ Million)

	2009-10	2010-11	2011-12	2012-13	2013-14
PAID-UP CAPITAL	278	280	246	231	209
RESERVES & SURPLUS	3,401	3,976	3,943	4,175	4,257
SECURED LOANS	317	511	586	747	772
UNSECURED LOANS	8	-	450	902	922
DEFERRED TAX LIABILITY (NET)	304	361	343	418	423
<b>TOTAL</b>	<b>4,307</b>	<b>5,129</b>	<b>5,567</b>	<b>6,472</b>	<b>6,584</b>
<b>REPRESENTED BY :</b>					
<b>GROSS BLOCK</b>	<b>4,606</b>	<b>4,896</b>	<b>5,095</b>	<b>5,664</b>	<b>5,619</b>
LESS : DEPRECIATION	1,994	2,154	2,024	2,081	2,076
<b>NET FIXED ASSETS</b>	<b>2,612</b>	<b>2,742</b>	<b>3,071</b>	<b>3,584</b>	<b>3,543</b>
CAPITAL WORK-IN-PROGRESS	510	1,300	1,596	1,658	1,610
INVESTMENTS / ADVANCES FOR INVESTMENT (PENDING ALLOTMENT)	454	571	687	719	708
NET CURRENT ASSETS	730	515	212	511	723
<b>TOTAL</b>	<b>4,307</b>	<b>5,129</b>	<b>5,567</b>	<b>6,472</b>	<b>6,584</b>
GROSS SALES	5,556	7,276	7,907	8,730	9,571
GROSS MARGIN	1,141	1,321	1,210	1,315	1,311
DEPRECIATION	123	144	153	178	194
INTEREST	15	18	23	35	60
PROFIT/(LOSS) BEFORE TAX	1,003	1,159	1,034	1,102	1,056
PROFIT/(LOSS) AFTER TAX	688	787	708	731	722
DIVIDEND INCL. INTERIM DIVIDEND	208	210	214	221	218
CORPORATE DIVIDEND TAX	35	34	35	37	37
INTERNAL GENERATION	811	931	861	910	916
NET WORTH	3,636	4,213	4,154	4,371	4,431
CAPITAL EMPLOYED INCLUDING ASSETS UNDER CONSTRUCTION & INVESTMENTS	4,307	5,129	5,567	6,472	6,584
<b># INR Converted in US\$ at the exchange rate prevalent on 31st March of respective financial year</b>	<b>45.67</b>	<b>45.23</b>	<b>51.63</b>	<b>54.99</b>	<b>60.61</b>

## FIVE YEAR PROFILE (CONSOLIDATED)

**(A) FINANCIAL**

(₹ in Crores)

	2009-10	2010-11	2011-12	2012-13	2013-14
PAID-UP CAPITAL	1,268.48	1,268.48	1,268.48	1,268.48	<b>1,268.48</b>
RESERVES & SURPLUS	16,541.47	19,945.39	23,646.05	27,526.18	<b>31,188.47</b>
SECURED LOANS	4,999.36	6,263.97	7,664.76	9,281.57	<b>11,793.64</b>
UNSECURED LOANS	413.81	640.13	3,840.87	7,190.75	<b>6,743.30</b>
MINORITY INTEREST	230.22	547.19	981.99	1,456.62	<b>1,758.78</b>
DEFERRED TAX LIABILITY (NET)	1,465.04	1,715.12	1,864.99	2,426.49	<b>2,730.35</b>
	<b>24,918.38</b>	<b>30,380.28</b>	<b>39,267.14</b>	<b>49,150.09</b>	<b>55,483.02</b>
<b>REPRESENTED BY :</b>					
<b>GROSS BLOCK</b>	<b>25,164.03</b>	<b>26,605.14</b>	<b>31,769.19</b>	<b>37,244.72</b>	<b>42,294.60</b>
LESS : DEPRECIATION	9,833.61	10,642.94	11,611.93	12,941.32	<b>14,515.23</b>
<b>NET FIXED ASSETS</b>	<b>15,330.42</b>	<b>15,962.20</b>	<b>20,157.26</b>	<b>24,303.40</b>	<b>27,779.37</b>
CAPITAL WORK-IN-PROGRESS	4,881.84	10,636.79	15,578.49	19,894.30	<b>20,400.43</b>
INVESTMENTS / ADVANCES FOR INVESTMENT (PENDING ALLOTMENT)	1,065.13	1,236.25	1,284.06	1,525.96	<b>1,476.85</b>
NET CURRENT ASSETS	3,640.99	2,545.04	2,247.33	3,426.43	<b>5,826.37</b>
	<b>24,918.38</b>	<b>30,380.28</b>	<b>39,267.14</b>	<b>49,150.09</b>	<b>55,483.02</b>
GROSS SALES	27,487.02	35,665.34	44,736.73	51,737.86	<b>62,598.79</b>
GROSS MARGIN	6,032.36	7,064.79	7,776.94	8,329.06	<b>9,254.63</b>
DEPRECIATION	823.43	887.98	1,055.67	1,333.90	<b>1,663.50</b>
INTEREST	385.34	377.86	366.43	437.31	<b>668.71</b>
PROFIT/(LOSS) BEFORE TAX	4,823.59	5,798.95	6,354.84	6,557.85	<b>6,922.42</b>
PROFIT/(LOSS) AFTER TAX (GROUP)	3,327.83	4,020.97	4,443.61	4,373.60	<b>4,786.22</b>
DIVIDEND INCL. INTERIM DIVIDEND	951.36	951.36	1,103.57	1,217.74	<b>1,319.21</b>
CORPORATE DIVIDEND TAX	158.99	155.32	179.02	203.03	<b>224.20</b>
INTERNAL GENERATION	4,151.26	4,908.95	5,499.28	5,707.50	<b>6,449.72</b>
NET WORTH	17,300.27	20,130.17	23,237.35	26,006.58	<b>28,957.58</b>
CAPITAL EMPLOYED INCLUDING ASSETS UNDER CONSTRUCTION & INVESTMENTS	24,918.38	30,380.28	39,267.14	49,150.09	<b>55,483.02</b>



## FIVE YEAR FINANCIAL PROFILE CONVERTED IN US\$\* ( CONSOLIDATED)

(In US\$ Millions)

	2009-10	2010-11	2011-12	2012-13	2013-14
PAID-UP CAPITAL	278	280	246	231	209
RESERVES & SURPLUS	3,622	4,410	4,580	5,006	5,146
SECURED LOANS	1,095	1,385	1,485	1,688	1,946
UNSECURED LOANS	91	142	744	1,308	1,113
MINORITY INTEREST	50	121	190	265	290
DEFERRED TAX LIABILITY (NET)	321	379	361	441	450
<b>TOTAL</b>	<b>5,456</b>	<b>6,717</b>	<b>7,605</b>	<b>8,938</b>	<b>9,154</b>
<b>REPRESENTED BY :</b>					
<b>GROSS BLOCK</b>	<b>5,510</b>	<b>5,882</b>	<b>6,153</b>	<b>6,773</b>	<b>6,978</b>
LESS : DEPRECIATION	2,153	2,353	2,249	2,353	2,395
<b>NET FIXED ASSETS</b>	<b>3,357</b>	<b>3,529</b>	<b>3,904</b>	<b>4,420</b>	<b>4,583</b>
CAPITAL WORK-IN-PROGRESS	1,069	2,352	3,017	3,618	3,366
INVESTMENTS / ADVANCES FOR INVESTMENT (PENDING ALLOTMENT)	233	273	249	277	244
NET CURRENT ASSETS	797	563	435	623	961
<b>TOTAL</b>	<b>5,456</b>	<b>6,717</b>	<b>7,605</b>	<b>8,938</b>	<b>9,154</b>
GROSS SALES	6,019	7,885	8,665	9,409	10,328
GROSS MARGIN	1,321	1,562	1,506	1,515	1,527
DEPRECIATION	180	196	204	243	274
INTEREST	84	84	71	80	110
PROFIT/(LOSS) BEFORE TAX	1,056	1,282	1,231	1,193	1,142
PROFIT/(LOSS) AFTER TAX (GROUP)	729	889	861	795	790
DIVIDEND INCL. INTERIM DIVIDEND	208	210	214	221	218
CORPORATE DIVIDEND TAX	35	34	35	37	37
INTERNAL GENERATION	909	1,085	1,065	1,038	1,064
NET WORTH	3,788	4,451	4,501	4,729	4,778
CAPITAL EMPLOYED INCLUDING ASSETS UNDER CONSTRUCTION & INVESTMENTS	5,456	6,717	7,605	8,938	9,154
<b># INR Converted in US\$ at the exchange rate prevalent on 31st March of respective financial year</b>	<b>45.67</b>	<b>45.23</b>	<b>51.63</b>	<b>54.99</b>	<b>60.61</b>